

**THIS PROJECT NEAR TO E-5 HIGHWAY IN ESENYURT/ISTANBUL**

**\$410,000**

**Lot No:** 14001

**Bathrooms:** 1-2

**Area (m2):** 66 - 290 m2

**Distance to Sea:** 7 KM

**Land Area (m2):** 132.000m2

**Distance to Airport:** 50 KM

**Bedrooms:** 5+

**Property Features;**

Parking	Smart House	Swimming Pool
Air Conditioning	Park	Satellite TV
Signaling	Elevator	Appliances
Concierge	Sauna	

**Description;**

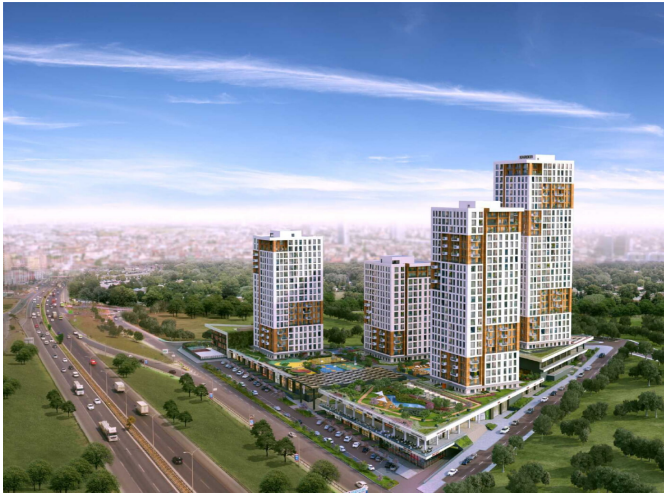
Located in an advantageous location in terms of transportation, the project draws attention with its proximity to the E-5 Highway, the busiest transportation axis of Istanbul, and shopping malls. Located in an area surrounded by important transportation networks such as Metrobus, TEM Highway and Atatürk Airport, the project provides a great advantage to its investors with its location. The construction work of the school, which was implemented within the scope of the project, has been completed. The school was opened for education and training.

The project, which is rising with an investment of 203 million TL on a construction area of 132 thousand square meters at the most valuable point of the region, stands out with its wide landscape and social living areas. While 85 percent of the project area is reserved for landscaping in the project, it offers a pleasant site life with its green textured concept, aesthetic architecture, comfortable apartments, commercial areas where daily needs can be met, and rich sports and social life areas. In the project; The bazaar concept, which will include 60 shops planned to meet the needs of the region, will create a special business and living space for investors. The project, which was developed to meet the needs of families with children, includes a private school with 27 classrooms, as well as indoor and outdoor activity areas where children can spend their time freely in safety.

Chairman of the board of the project owner construction company; "We got full marks from our customers with another project we built next to the Beylikdüzü - Bahçeşehir TEM connection road. Many of our customers who bought housing from this project brought their loved ones with them. We are implementing this second project in the region in order to meet the demand. We kept the prices at an economical rate compared to the region and project equipment. In the project with a floor height of 370 cm, we developed a 1,000 square meter social facility for children. In the project, which is a family project, 20 percent of the residences are 1+1s and 80 percent are 2+1, 3+1 and 4+1 apartments. In our first project in the region, we earned a premium of around 150 percent to our first investors. We aim to create projects for the needs of people and to earn them."

**THIS PROJECT NEAR TO E-5 HIGHWAY IN ESENYURT/ISTANBUL**

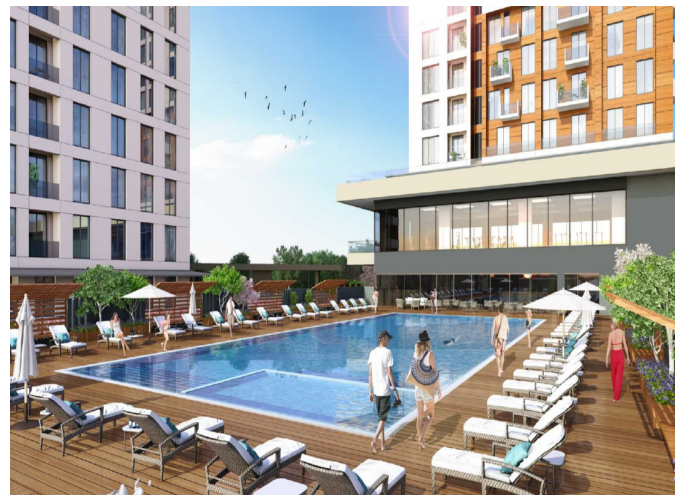
**\$410,000**





**THIS PROJECT NEAR TO E-5 HIGHWAY IN ESENYURT/ISTANBUL**

**\$410,000**







DAİRE TİPİ	3+1	A3
Giriş Holü	5.00 m <sup>2</sup>	
Salon	36.49 m <sup>2</sup>	
Mutfak	13.09 m <sup>2</sup>	
Genel Banyo	3.78 m <sup>2</sup>	
Koridor	8.81 m <sup>2</sup>	
Çamaşır Odası	2.04 m <sup>2</sup>	
Yatak Odası	8.59 m <sup>2</sup>	
Yatak Odası	10.14 m <sup>2</sup>	
Ebeveyn Süiti	21.80 m <sup>2</sup>	
Ebeveyn Banyo	4.06 m <sup>2</sup>	
Balkon	4.03 m <sup>2</sup>	
Balkon	3.04 m <sup>2</sup>	
Balkon	3.38 m <sup>2</sup>	
Balkon	3.48 m <sup>2</sup>	
<b>NET ALAN</b>	<b>: 127,77 m<sup>2</sup></b>	
<b>TAHSİSLİ DEPO</b>	<b>: 5,00 m<sup>2</sup></b>	
<b>GENEL BRÜT ALAN</b>	<b>: 205,99 m<sup>2</sup></b>	



DAİRE TİPİ	1+1	A1
Yaşam Alanı	25.17 m <sup>2</sup>	
Genel Banyo	3.78 m <sup>2</sup>	
Ebeveyn Yatak Odası	10.35 m <sup>2</sup>	
Balkon	2.36 m <sup>2</sup>	
<b>NET ALAN</b>	<b>: 41,66 m<sup>2</sup></b>	
<b>TAHSİSLİ DEPO</b>	<b>: 2,50 m<sup>2</sup></b>	
<b>GENEL BRÜT ALAN</b>	<b>: 68,14 m<sup>2</sup></b>	



DAİRE TİPİ	4+1	A3
Giriş Holü	7.59 m <sup>2</sup>	
Salon	34.98 m <sup>2</sup>	
Mutfak	12.14 m <sup>2</sup>	
Genel Banyo	4.20 m <sup>2</sup>	
Koridor	8.33 m <sup>2</sup>	
Çamaşır Odası	3.26 m <sup>2</sup>	
Yatak Odası	8.51 m <sup>2</sup>	
Yatak Odası	8.35 m <sup>2</sup>	
Yatak Odası	9.73 m <sup>2</sup>	
Ebeveyn Süiti	20.35 m <sup>2</sup>	
Ebeveyn Banyo	4.95 m <sup>2</sup>	
Balkon	4.05 m <sup>2</sup>	
Balkon	6.05 m <sup>2</sup>	
Balkon	1.97 m <sup>2</sup>	
<b>NET ALAN</b>	<b>: 134,46 m<sup>2</sup></b>	
<b>TAHSİSLİ DEPO</b>	<b>: 6,28 m<sup>2</sup></b>	
<b>GENEL BRÜT ALAN</b>	<b>: 217,51 m<sup>2</sup></b>	



DAİRE TİPİ	2+1	B1
Giriş Holü	11.90 m <sup>2</sup>	
Salon	30.79 m <sup>2</sup>	
Mutfak	10.75 m <sup>2</sup>	
Genel Banyo	3.60 m <sup>2</sup>	
Çamaşır Odası	0.54 m <sup>2</sup>	
Yatak Odası	8.91 m <sup>2</sup>	
Ebeveyn Yatak Odası	13.40 m <sup>2</sup>	
Ebeveyn Banyo	2.77 m <sup>2</sup>	
Balkon	2.75 m <sup>2</sup>	
<b>NET ALAN</b>	<b>: 85,41 m<sup>2</sup></b>	
<b>TAHSİSLİ DEPO</b>	<b>: 3,75 m<sup>2</sup></b>	
<b>GENEL BRÜT ALAN</b>	<b>: 135,62 m<sup>2</sup></b>	

