

ONE OF THE LARGEST PROJECT ANATOLIA SIDE USKUDAR/ISTANBUL

\$550,000

Lot No: 42001

Balconies: 1-2

Area (m2): 62 - 315 m 2

Terraces: One

Land Area (m2): 30,622 sq. m

Distance to Sea: 7 km

Bedrooms: 3

Distance to Airport: 60 km

Bathrooms: 1-3

Property Features;

Balcony

Parking

Smart House

Swimming Pool

Air Conditioning

Park

Satellite TV

Terrace

Signaling

Elevator

Appliances

Concierge

Sauna

Description;

This project is being built in one of Istanbul's favorite districts, Acibadem. The region, where the two continents meet, is home to the project with its distinctive location, nature and history. The offered living spaces which are fine and well-maintained will increase your quality of life.

The project rises on an area of 30,622 m² with its attractive architecture and unlimited social opportunities, consisting of 9 blocks. Blocks have 563 flats and 15 floors in total. Apart from its 1+1 to 3+1 apartment options, the project makes it possible to find a suitable house for every family and request, with its 394 specially designed apartments that can extend to 5+1.

A Place That Comes to Life at the Confluence of Two Sides: Benesta Acibadem

Being one step ahead with its location that connects the Asian and European sides, The project also draws attention with its proximity to many centers. It offers the opportunity to connect to all points of Istanbul with its easy access to the main roads and its proximity to public transportation. Furthermore, the hospitals, educational institutions, shopping centers and historical places will provide you with a location that will both support your social life and meet your needs. Apart from these, the project is close to many spots such as;

- Uzuncayir Metrobus - 2 km
- Unalan Metro - 5 km
- Avrasya Tunnel - 5 km
- July 15 Martyr's Bridge - 11 km
- Akasya Shopping Mall - 1 km
- Camlica Tower - 3.8 km

Living Spaces That Brings the Social Facilities to Another Level

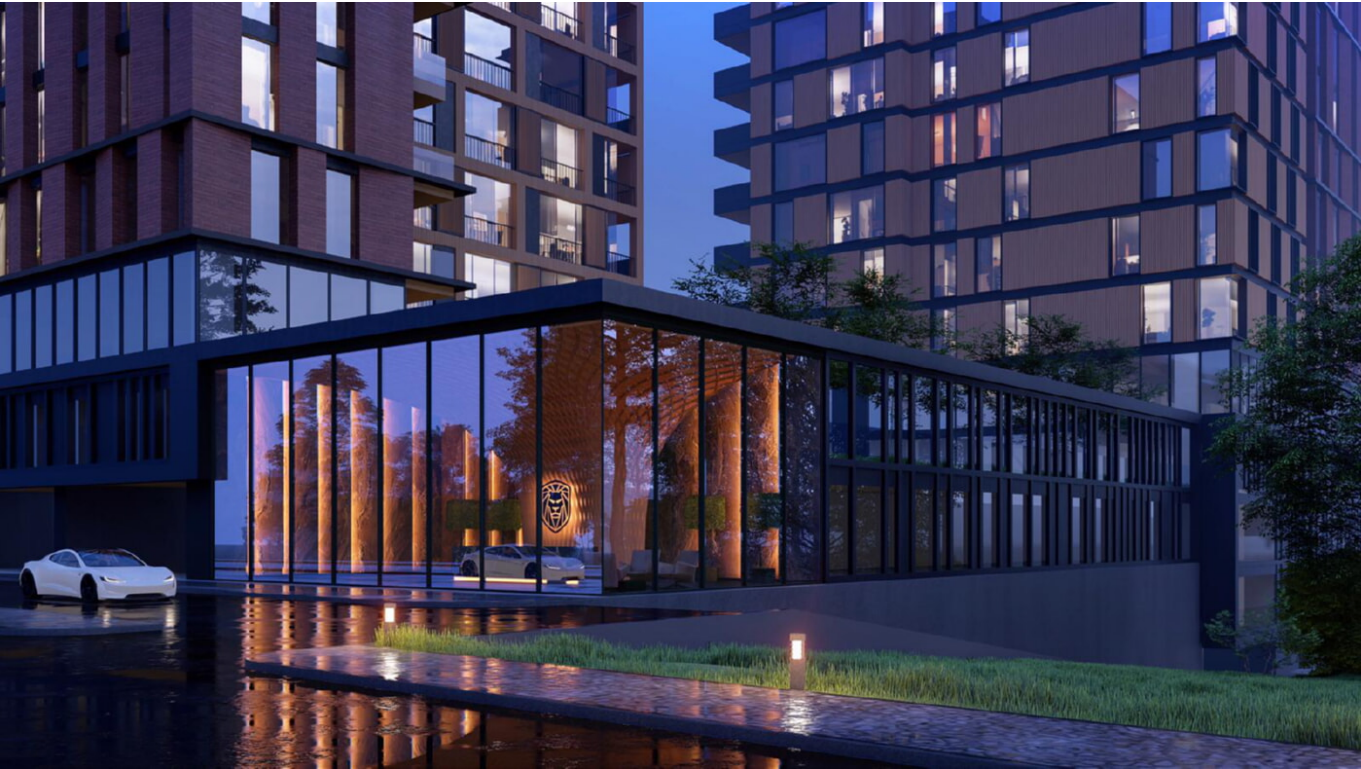
Aiming to offer you a unique experience with all its possibilities, the project continues its privileges within the location advantages. Benesta Hub, located in a 6.250 m² space, offers you a special socializing area. The area consists of markets, local cafes and restaurants. For physical activities, a 1.725 m² space is organized. It offers facilities such as an indoor pool, gym, spa, sauna and massage. In addition to all these, BenLeo Park is perhaps the most striking aspect of the project. Significantly, it brings a first in the world to life with its original content. It opens the doors of unique experiences with fruit trees, a sky bridge, skateboarding tracks, camping areas, a mini basketball court and more. [Contact us](#) to get information about all these opportunities of The project and other Istanbul housing projects.

A New Breath in Living Space: Benesta Acibadem BenLeo Park

The project housing project breaks new ground in the world. It brings a brand new breath to the living space! BenLeo park is perhaps one of the most striking aspects of this project. With its special design and original content, it will increase the quality of your life. More than you might expect from a living space is included here. Imagine a place where the warmth of nature surrounds you. Besides, it is located in the middle of the city. You will be pleased to take part in this unique living space.

The project brings together the most beautiful elements of nature with professional designs. An environment decorated with fruit trees and accompanying sky-walking trails. You will be surrounded by fragrant scents while refreshing in the lush green area. Both you and your children will be able to take pleasant walks on the sky walking track. There are more of these at BenLeo park. You will perform your physical activities in the open area with skateboarding tracks and a mini basketball court. In addition, you will be able to taste the camping experience at The project BenLeo Park. With the camping areas, you will be able to experience unique experiences without leaving the comfort of your living space. The project's new real estate housing project is waiting to be embraced by your residents with its first-of-its-kind content.

The project stands out not only with its park but also with its social facilities, comfort, luxury, location advantages, and architectural features. Reserve your place in this privileged living space!



ONE OF THE LARGEST PROJECT ANATOLIA SIDE USKUDAR/ISTANBUL

\$550,000





Bu sayfadaki görseller tanıtım amaçlı olup, Esta İnşaat Sanayi Lojistik ve Dış Tic. A.Ş. projede değişiklik yapma hakkına sahiptir. Lütfen dikkatli olun.