

ONE OF THE BEST PROJECT BRING RENTAL INCOME IN SISLI/ISTANBUL

\$600,000

Lot No: 25001

Bathrooms: 1-2

Area (m2): 63-241 m 2

Heating: Central heating

Land Area (m2): 18,000 sqm

Distance to Sea: 7 km

Bedrooms: 3

Distance to Airport: 37 km

Property Features;

Parking	Smart House	Swimming Pool
Air Conditioning	Park	Satellite TV
Signaling	Elevator	Appliances
Concierge	Sauna	

Description;

The project aims to provide a comfortable life for both the neighborhood and the real estate owners. The interior quality of the housing project contributes to the elegance of the living spaces. The architectural approach, which focuses on taste and aesthetics, is demonstrated by high-quality applications.

If you want to keep up with the dynamic and fast life in Istanbul, the project is for you. Offering low-rise and practical living, the project offers you the concept of accessible luxury. At the same time, the project is among the wonderful residential projects in Istanbul with its apartments overlooking the Bosphorus. The project gains value with its location.

After enjoying the pool and sunbathing on the terrace, you can walk to the first and only square in the area, and after eating, you can pass through the walking paths and reach the areas for sitting and resting with your own pergolas. You can enjoy the ornamental ponds and artificial hills and experience this pleasure every day in the social areas of the project.

The project offers the most luxurious apartments in the city with its unique location, construction quality, distinguished services, and advanced technological infrastructure. After leaving your home, you can walk to Mecidiyeköy, işli and Nişantaşı within minutes. You can access the beach from Dolmabahçe Tunnel and TEM highway from Kağıthane Tunnel.

Within the scope of the project, you can benefit from social facilities such as an indoor swimming pool, an outdoor swimming pool, an indoor car park, indoor playgrounds and playgrounds for children, a fitness center, sauna, Turkish bath and steam room. In addition to social facilities, the project is distinguished by its central location. The project is very close to shopping centers, universities and schools.

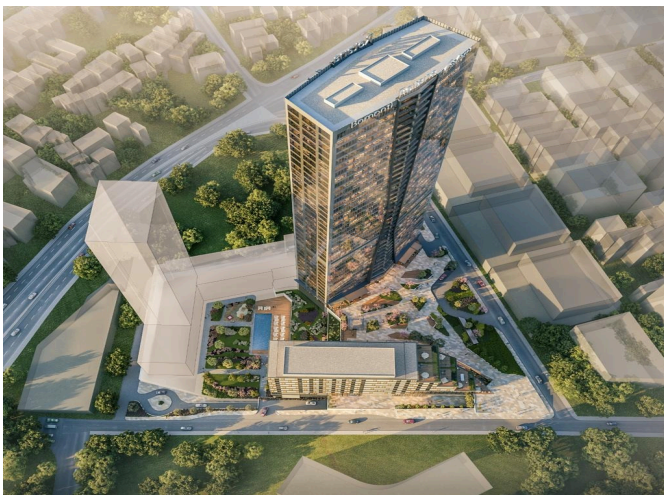
ONE OF THE BEST PROJECT BRING RENTAL INCOME IN SISLI/ISTANBUL

\$600,000



ONE OF THE BEST PROJECT BRING RENTAL INCOME IN SISLI/ISTANBUL

\$600,000



ONE OF THE BEST PROJECT BRING RENTAL INCOME IN SISLI/ISTANBUL

\$600,000

