

LUXURIOUS PROJECT NEAR THE SEA IN ZEYTINBURNU/ISTANBUL

\$2,000,000

Lot No: 147

Terraces: 1

Area (m2): 75 - 400 m2

Number of Floors: 14

Land Area (m2): 63500 m2

Year of Construction: 2015

Bedrooms: 5+

Distance to Sea: 100M

Bathrooms: 1-2

Distance to Airport: 50KM

Balconies: 1

Property Features;

Balcony

Parking

Sauna

Concierge

Appliances

Elevator

Signaling

Terrace

Satellite TV

Park

Smart House

Swimming Pool

Air Conditioning

Description;

The project is being implemented in Zeytinburnu, one of the most popular settlements in Istanbul. It holds the signature of a reliable construction company. There are 848 flats in total in the project. There is a precious land belonging to TOBB (Turkish Union of Chambers and Commodity Exchanges) in the project, adding value and importance to the project. Buy a new property from the project, have lifetime benefits in Turkey. You can evaluate this possibility that you can live with your loved ones.

The residential project, located in an area of 63,500 m², is the coastal project of Istanbul. The project is one of the most remarkable housing projects as it is a hotel with 7 blocks and 245 meters of block management. The title deeds of 51.500 m² in total, where green and blue meet, are ready and can be delivered in a short time.

In the project, which includes a comprehensive residence service and open-closed social facility areas that provide all services to its buyers; It glosses over as 70-41 Guardian Extra Clear Glass and stands out with its glass walls. It is a premium technology used exclusively for this project. Get the best reviews!

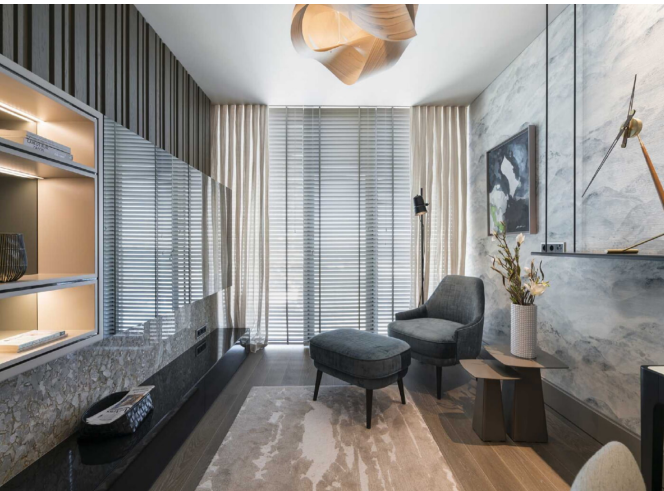
You will enjoy Istanbul with this project, which offers playgrounds, indoor and outdoor pools, panoramic terraces, and garden duplexes surrounded by a unique landscape. The project, which is one of the

LUXURIOUS PROJECT NEAR THE SEA IN ZEYTINBURNU/ISTANBUL

\$2,000,000

housing projects with sea view, offers a traffic-free life in the center of the city. Due to the central location of the region, the project offers easy access to the Historic Peninsula. The project is located in the most popular location of Zeytinburnu with its coastlines extending to the Bosphorus. It draws attention with its Marmaray and Eurasia Tunnel connection.





LUXURIOUS PROJECT NEAR THE SEA IN ZEYTINBURNU/ISTANBUL

\$2,000,000

