

LUXURIOUS PROJECT CLOSE TO SEA IN MALTEPE/ISTANBUL

\$870,000

Lot No: 158

Balconies: 1

Area (m2): 60 - 260 m2

Terraces: 1

Land Area (m2): 5300 m2

Number of Floors: 15

Bedrooms: 1

Year of Construction: 2017

Bathrooms: 1-2-3

Distance to Sea: 850 M

Property Features;

Parking

Smart House

Swimming Pool

Air Conditioning

Park

Balcony

Satellite TV

Signaling

Elevator

Appliances

Concierge

Sauna

Terrace

Description;

The project presents a blue life with sea view housing options. The project, which takes its place among the housing projects on the Asian Side, provides different housing alternatives. It offers many residences from 1+1 to 5+1 duplex flats.

If you desire, you can buy a minimal living space by choosing the 1+1 apartment type, or you can share your house with your family or loved ones with the 5+1 duplex house type. There is also a terrace area in the duplex residences in the project. You will be able to watch the sea and the Islands views from your terrace at any time of the day. Get ready for a blue project where you will have a unique visual feast!

A Visual Feast with Sea View Apartments for Sale

The project provides the opportunity to own a house at affordable prices. The project makes it easy for you to purchase a house with easy payment terms. In the project, where you have many alternatives with different housing types, you will also make a good investment. Sea view apartments that will always shine like a star in Maltepe Istanbul... The project is developed in Yali Neighborhood, the most popular district of Maltepe. Take your place in Maltepe's pearl location, a profitable project with high investment value!

The project Offers Amazing Social Opportunities

There are many social facilities where you can spend social time in the project. You will open the doors of a peaceful life in your home which is secured by expert security teams. Wide green areas, outdoor swimming pool, children's pool, multi-purpose sports area, hobby room, Turkish bath, sauna are the social opportunities of the Maltepe project. Get ready for a project that takes your parking trouble away and thinks of everything for you with its outdoor parking area and guest parking area.

LUXURIOUS PROJECT CLOSE TO SEA IN MALTEPE/ISTANBUL**\$870,000**

The project which takes its place among Istanbul real estate projects offers luxury apartments in the center of Istanbul. You will be intertwined with the dynamism of life while enjoying the view on your terrace. While aiming to offer a superior life with spacious areas of use, the project invites you to colorful life. You will love this residential project which combines green and blue and naturally!

The project with Wide Transportation Networks

You will have a well-equipped project that offers different transportation alternatives in the most central area of Maltepe. The project differs from many projects in the region. Firstly, you will have a wide transportation network thanks to the project. Secondly, you will be living in the busiest area of Maltepe, within walking distance of the beach, and 5 minutes to E-5 Highway. Thirdly, you are in a location that you can arrive at TEM Highway within 10 minutes, Maltepe Coastal Road, Bagdat Street and IDO Ferry Terminal. Do not forget to reserve your place in the sea view housing project!

LUXURIOUS PROJECT CLOSE TO SEA IN MALTEPE/ISTANBUL

\$870,000





LUXURIOUS PROJECT CLOSE TO SEA IN MALTEPE/ISTANBUL

\$870,000

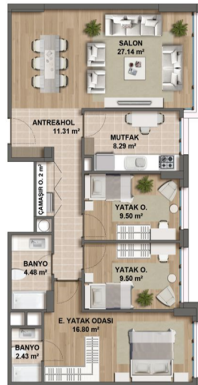


B BLOK 3+1 4 Adet

2. Kat D-11 / 12. Kat D-75
13. Kat D-81 / 14. Kat D-87

Salon	27.14 m ²
Mutfak	6.29 m ²
Antre & Hol	8.31 m ²
Yatak Odası 1	9.50 m ²
Yatak Odası 2	9.50 m ²
Banyo	4.48 m ²
Campani Odası	2.00 m ²
E. Yatak Odası	16.80 m ²
E. Banyo	2.43 m ²

NET ALAN 91.45 m²
BRÜT ALAN 133.00 m²



LUXURIOUS PROJECT CLOSE TO SEA IN MALTEPE/ISTANBUL

\$870,000

