

LUXURIOUS FAMILY CONCEPT PROJECT IN BASAKSEHIR/ISTANBUL**\$387,000****Lot No:** 2010**Bathrooms:** 1 - 2**Area (m2):** 90 - 210 m2**Balconies:** 1**Land Area (m2):** 17.296 m2**Distance to Sea:** 20 KM**Bedrooms:** 4**Distance to Airport:** 31 KM**Property Features;**

Sauna	Balcony	Parking
Smart House	Swimming Pool	Air Conditioning
Park	Satellite TV	Signaling
Elevator	Appliances	Concierge

Description;

The project is rising in Istanbul, Basaksehir, which is one of the most valuable districts. The project, the ambitious project of Istanbul's fastest and most regularly developing district in the last twenty years, is waiting for its investors. The project invites you to a privileged life...

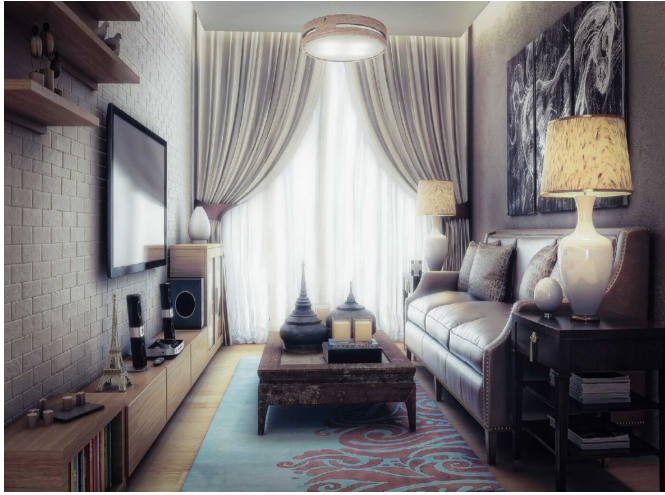
The project, which has a total construction area of 35,533 square meters, includes 198 apartments. Comfortable interior designs stand out in the apartments created by combining high-quality materials and aesthetics. Offering 2+1, 3+1 and 4+1 apartment options, the project invites you to live your dreams with its architecture and comfort...

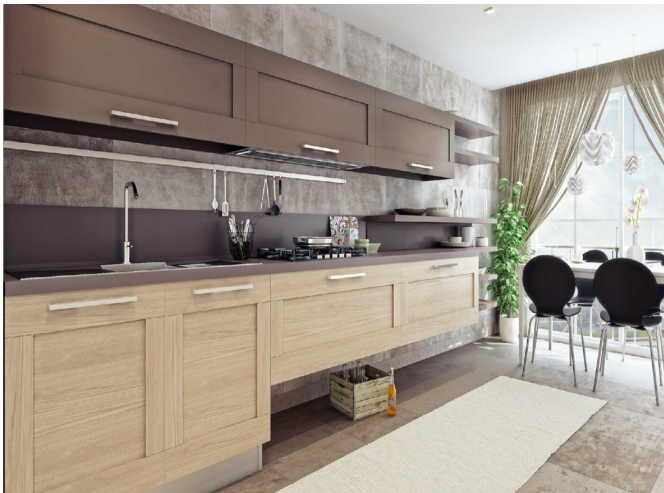
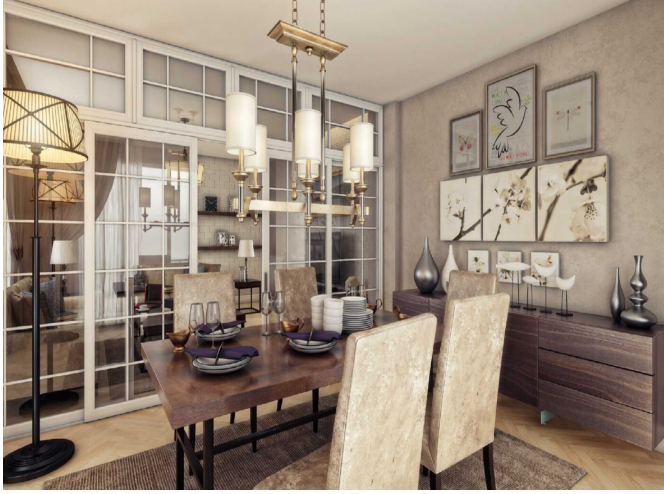
Privileged Social Facilities

Privileged social facilities in the project have been considered for you. In the project where the indoor swimming pool is located, you will enjoy swimming in summer and winter. In the SPA, sauna and also hammam you will relieve the tiredness of the day. The project did not forget the sports fans. The opportunity to do sports at any time of the day in the indoor and outdoor sports areas is also possible. In the indoor and outdoor children's parks, your children will have a safe and enjoyable time. There is a nursery and also lush walking paths which are designed for you and your family's peaceful walks. The project has thought of everything so that you can have a pleasant time with your loved ones with its indoor and outdoor social areas. With this project you will enjoy the landscape areas and comfort at all times...

A Project in the Heart of New Istanbul: The project

Are you ready for a brand-new project in the heart of New Istanbul, which takes attention by its lush texture and modern architecture? A city surrounded by an airport and Canal Istanbul... At the heart of new Istanbul is the rapidly developing and growing district of Basaksehir. The project, facilitates transportation by metro that is located 2 minutes away. Furthermore, it is 5 minutes away from TEM Highway while also being 12 minutes away from E-5 Highway. You can also reach the bridge in only 12 minutes.







B-Blok

2+1 Orta Daire Brüt 118,50m²
Net 84,59m²

Daire Planları



1. Salon	:25,84 m ²
2. Yatak Odası	:13,10 m ²
3. Eb. Yatak Odası	:16,05 m ²
4. Eb. Banyo	: 2,64 m ²
5. Çamaşır Odası	: 1,10 m ²
6. Banyo	: 3,74 m ²
7. Mutfak	: 9,37 m ²
8. Antre	: 9,10 m ²
9. Balkon	: 3,65 m ²



B-Blok

2+1 Köşe Daire Brüt 126,75m²
Net 90,53m²

Daire Planları



1. Salon	:25,75 m ²
2. Yatak Odası	:14,14 m ²
3. Eb. Yatak Odası	:14,40 m ²
4. Eb. Banyo	: 3,54 m ²
5. Çamaşır Odası	: 1,92 m ²
6. Banyo	: 4,51 m ²
7. Mutfak	:11,18 m ²
8. Antre	:10,34m ²
9. Balkon	: 4,75m ²



A-C-D BLOK

4+1 Daire Brüt 210,88m²
Net 150,63m²

Daire Planları



1. Salon	:43,15 m ²
2. Oturma Odası	:13,50 m ²
3. Yatak Odası	:12,30 m ²
4. Yatak Odası	:11,85 m ²
5. Eb. Yatak Odası	:21,10 m ²
6. Eb. Banyo	: 3,81 m ²
7. Çamaşır Odası	: 3,38 m ²
8. WC	: 1,85 m ²

9. Banyo	: 4,80 m ²
10. Mutfak	:16,20 m ²
11. Antre	:12,39 m ²
12. Balkon	: 6,30 m ²



A-C-D BLOK

3+1 Daire Brüt 115,93m²
Net 162,30m²

Daire Planları



1. Salon	:29,40 m ²
2. Yatak Odası	:12,54 m ²
3. Yatak Odası	:12,16 m ²
4. Eb. Yatak Odası	:20,40 m ²
5. Eb. Banyo	: 3,30 m ²
6. Çamaşır Odası	: 1,10 m ²
7. Banyo	: 4,95 m ²
8. Mutfak	:10,15 m ²
9. Antre	:11,69 m ²
10. Balkon	:10,20 m ²

