

Lot No: en9033

Bedrooms: 3

Area (m2): 101

Bathrooms: 2

Land Area (m2): 42000

Balconies: 1

Number of Rooms: 1

Floor: 12

Property Features;

Balcony
Smart House
Elevator

Parking
Park

Swimming Pool
Sauna

Description;

An excellent family residential project located in the Bahçelievler area, directly opposite the Y tram.

Turkish company with 34 years of experience in the world in construction and various fields such as: Offices, hotels, hospitals and hotels.

More than 85 projects in 18 countries in the world, such as Russia, Kazakhstan, Thailand, Dubai and Turkey.

Project details:

The project consists of 11 buildings, each building is isolated from the other, with a distance of 25 m to 37 m between one building and the other, and a width of 62 m to 71 m.

A private entrance and exit for each building, in addition to a reception service in each building.

Sound insulation in walls and glass
Windows extending from floor to ceiling
Floor heating
Perfect utilization of space
Each apartment has a balcony or independent garden
Open-air cinema
Fitness complete with all devices
Reception + lobby
Karaoke rooms + PlayStation
Indoor pool and outdoor sand pool
Terraces for each building (panoramic views)
Valet service with charging points available in the parking lots
Children's games
Spaces designated for yoga
A 42,000 m2 forest belonging to the project provides football fields, tennis and basketball courts.
Protection service 7/24
Mall contains 29 shops

LUXURIOUS PROJECT IN BAHCELIEVLER / ISTANBUL

\$684,000

(Includes international brands such as:

Big chief, Starbucks, Mado, English Home, Cloths Brand + Restaurants and Cafes)

It is only 3 km, 10 minutes away from the Marina Coast (Floria).
One of the most beautiful beaches, characterized by its large coastline and the purity of its waters, in addition to the presence of the largest park on the sea that provides swimming pools, restaurants, and cafes.

The surroundings are distinctive, residential and family par excellence, in addition to all services from hospitals, universities, schools, shopping centers and parks.

Accessibility

The tram and any walking distance is only one minute away.

M1 metro line, walking distance of only 8 minutes.

Metro Bus line is only a 10-minute walk away.

About the project

The total land area is 75,000 square meters, on which a commercial mall consisting of 29 shops has been built.

11 residential buildings with heights from 8 to 13 floors.

The mall's area is 75,000 square meters

The landscape area is 33,000 square meters

Available residential units:

2+1 American kitchen and a closed kitchen

3+1 American kitchen and a closed kitchen

4+1 with garden or high floors.

Duplex options are also available.

Payment plans:

Cash + convenient installment option:

50% down payment, 12 months installments.

50% down payment, 18 months installments.

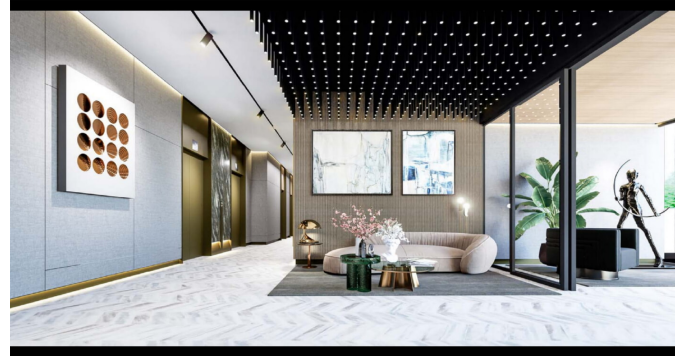
Delivery date: 2024

Suitable for obtaining Turkish citizenship

Title deed fees 2%

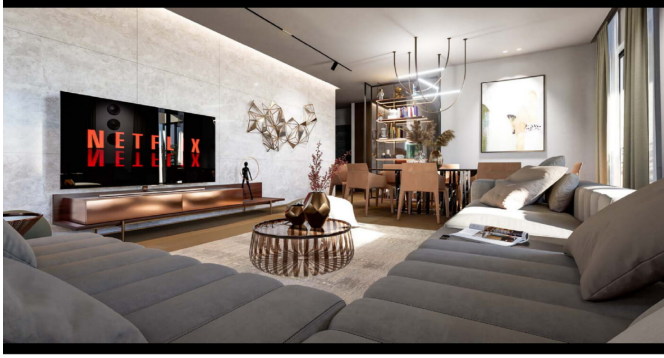
Tax: 1%, ground floor options





LUXURIOUS PROJECT IN BAHCELIEVLER / ISTANBUL

\$684,000



3+1 C1

- SALON + MÜHÜRKE 28,54 m²
- ANTRİ 6,63 m²
- HOL 8,55 m²
- YATIR ODA 1 10,02 m²
- YATIR ODA 2 10,02 m²
- EVİ YATIR ODA 16,17 m²
- EVİ BANYO 6,08 m²
- GENEL BANYO 3,68 m²
- BALCON 13,15 m²

TOPLAM NET ALAN 101,20 m²
TOPLAM SATIŞ BİYET ALANI 131,13 m²

