

**AMAZING FAMILY CONCEPT PROJECT AT THE HEART OF HISTORY IN
FATIH/ISTANBUL**

\$550,000

Lot No: 178**Bathrooms:** 1-2**Area (m2):** 70 - 210 m2**Balconies:** 1**Land Area (m2):** 15500 m2**Number of Floors:** 11**Bedrooms:** 3**Distance to Airport:** 25 KM**Property Features;**

Sauna

Concierge

Appliances

Elevator

Signaling

Balcony

Parking

Smart House

Swimming Pool

Air Conditioning

Park

Satellite TV

Description;

Consisting of 5 blocks, 371 flats and 9 commercial units, the project offers a wide range of flats from 1+1 to 3+1, from 70 m² to 190 m². The turnkey project gives its residents the opportunity to move into their flats immediately after the sale and enjoy the luxury and comfort in their new homes. While the project is also suitable for Turkish citizenship application, it offers a warm home with a Turkish passport, while Turqua Invest provides its customers with support in all these procedures and provides the necessary services for the smooth progress of the processes.

The project, located in Topkapı, one of the liveliest districts of Istanbul and whose value is increasing day by day, stands out as a magnificent investment opportunity. Located in the very center of the city, the project provides easy access to every point of Istanbul, and is only a few minutes away from the most important points of the city, making the lives of its residents easier.

Davutpaşa Metro Stop: 2 minutes walking distance

Yıldız Technical University: 3 minutes walking distance

Istanbul Yeni Yüzyıl University: 500 m

İstinye University: 550 m

Cevizlibağ Metro Station: 600 m

Cevizlibağ Metrobus and Tram Stops: 700 m

Koç University Hospital: 1 km

Istanbul University Cerrahpasa Medical Faculty: 2.3 km

Istanbul University Medical Faculty Hospital: 2.3 km

Yenikapi Sea Bus Terminal: 4 km

Eurasia Tunnel: 6 km

Taksim: 10 km

Bosphorus Bridge: 15 km

Besiktas: 17 km

Istanbul Airport: 25 km

**AMAZING FAMILY CONCEPT PROJECT AT THE HEART OF HISTORY IN
FATIH/ISTANBUL**

\$550,000



**AMAZING FAMILY CONCEPT PROJECT AT THE HEART OF HISTORY IN
FATIH/ISTANBUL**

\$550,000

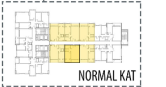


**AMAZING FAMILY CONCEPT PROJECT AT THE HEART OF HISTORY IN
FATİH/ISTANBUL**

\$550,000



**2. Etap
A Blok**
Daire Tip-3A/3B

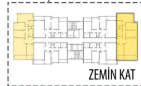
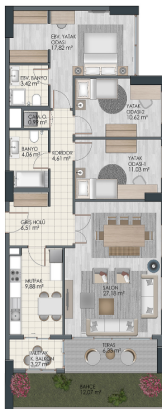


4,5,6,15,16,17,20,21,22,26,
27,28,31,32,33,37,38,39,42,43,44,
48,49,50,53,54,55,59,60,61,64,65,
66,70,71,72,75,76,77,81,82,83,86,
87,88,92,93,94,97,98,99,103,104,
105,108,109,110 Nolu Daireler

1+1

Net Alan: 41,57 m²
Kapalı B. Net Alan: 3,75 m²
Açık B. Net Alan: 3,77 m²
Satılabilir Alan: 71,88 m²

**2. Etap
C Blok**
Daire Tip-2



2,5 Nolu Daireler

3+1

Net Alan: 96,15 m²
Kapalı B. Net Alan: 3,30 m²
Açık B. Net Alan: 6,33 m²
Teras Net Alan: 12,07 m²
Satılabilir Alan: 135,80 m²

**2. Etap
C Blok**
Daire Tip-1



7,9,10,12,13,15,16,18,19,21,22,
24,25,27,28,30,31,33,34,36,37,
39,40,42,43,45,46,48,49,51,52,
54,55,57,58,59,60,61,63,64,66,
67,69,70,72 Nolu Daireler

2+1

Net Alan: 76,50 m²
Kapalı B. Net Alan: 3,26
Açık B. Net Alan: 5,27 m²
Satılabilir Alan: 120,40 m²