

**A PROJECT VERY CLOSE TO SEA IN BUYUKCEKMECE/ISTANBUL****\$310,000****Lot No:** 995**Balconies:** 1**Area (m2):** 92 - 224 m<sup>2</sup>**Terraces:** 1**Bedrooms:** 5+**Number of Floors:** 4**Bathrooms:** 1-2**Property Features;**Sauna  
Elevator  
Satellite TV  
Swimming Pool  
ParkConcierge  
Signaling  
Balcony  
ParkingAppliances  
Terrace  
Smart House  
Air Conditioning**Description;**

The project is being built on the European Side of Istanbul. The housing project, consisting of 80 units, consists of 4 blocks with 4 floors. The building, which is among the Istanbul real estate housing projects, helps you choose the right apartment for you with different apartment options.

There are 2+1, 3+1, 4+1, 4+2 and 5+1 flat types in the rising housing project in Büyükçekmece. The width of the flats is 92 to 97 m<sup>2</sup> in 2+1, 125 to 139 m<sup>2</sup> in 3+1, 167 m<sup>2</sup> in 4+1, 218 to 224 m<sup>2</sup> in 4+2 and 186 m<sup>2</sup> in 5+1 flats.

**A New Life Awaits You with the Project!**

The project offers not a new house but a new life in Büyükçekmece with its 80 flats. The project offers special opportunities for those who want to both invest and live. With the social facilities in the site, everything is located close to you. Offering a new life in Büyükçekmece, the rising value of Istanbul, the project attracts the attention of buyers with its sea and lake views.

Büyükçekmece housing project offers social opportunities that everyone can benefit from at the same time. There are outdoor pool and children's pool options in the project. Areas where you can enjoy the water to the fullest, whether big or small, are waiting for you. You can participate in a stress-free life by taking advantage of the outdoor pool, Turkish bath, sauna and massage facilities.

Rising in Büyükçekmece with housing options for sale, the project makes it easier for you to own a house with apartment types suitable for your budget. the project is among the Istanbul housing projects to be delivered in 2021.

**The Project Comes to the Fore with Its Modern Architecture**

An elite life in these residences, where you can spend time with your family, has been designed with you in mind. A life full of fun and peace awaits you in these residences, where modern architecture

**A PROJECT VERY CLOSE TO SEA IN BUYUKCEKMECE/ISTANBUL**

**\$310,000**

comes to the fore. Many details have been considered for you in these living spaces where your daily needs are met with comfort. The project, which are protected by 24/7 security, have areas such as an open car park, green areas, swimming pool, gymnastics, sauna, Turkish Bath, and steam room.

**The project, the central location of the European Side**

It is located in Büyükçekmece. housing project; It is 50 m to the E-5, 500 m to the beach where you can take long walks, 850 m to the marina, 6 km to TÜYAP, 100 m to Metrobus, 6 km to TEM Connection Road, 16 km to Hadımköy Tolls . The project is located one step away from many state hospitals, schools, market places and markets, especially public transportation vehicles.

**A PROJECT VERY CLOSE TO SEA IN BUYUKCEKMECE/ISTANBUL**

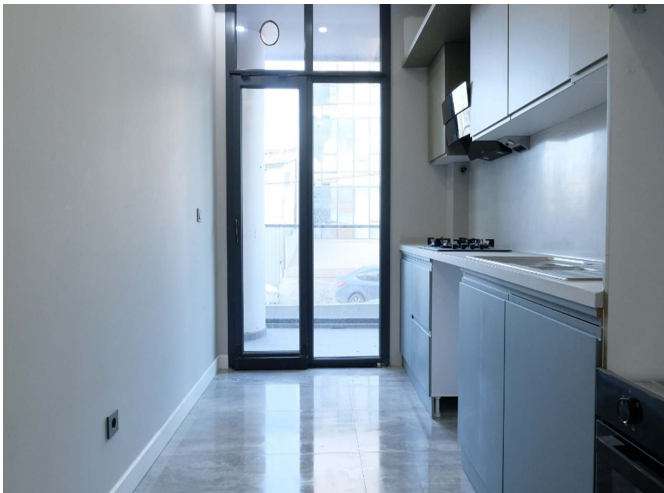
**\$310,000**





**A PROJECT VERY CLOSE TO SEA IN BUYUKCEKMECE/ISTANBUL**

**\$310,000**







**A PROJECT VERY CLOSE TO SEA IN BUYUKCEKMECE/ISTANBUL**

**\$310,000**

